

如何安裝 Byteblaster & Programmer at Windows 2000

1. Support version :

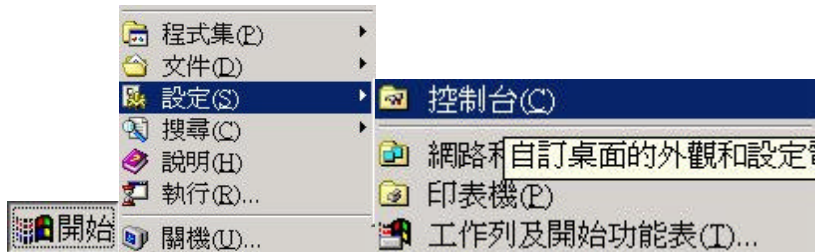
- Maxplus2 9.6
- Quartus 2000.03

2. Drivers path :

- Maxplus2 <Maxplus2 install path >\Drivers\win2000\
 Default path=c:\maxplus2\drivers\win2000
- Quartus <Quartus install path>\Drivers\win2000
 Default path=c:\Quartus\drivers\win2000

3. 安裝程序 ;

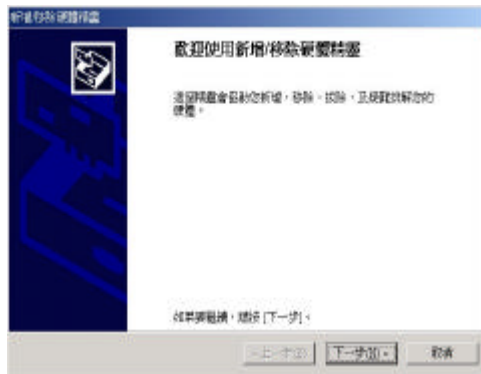
➤ 1 到控制台



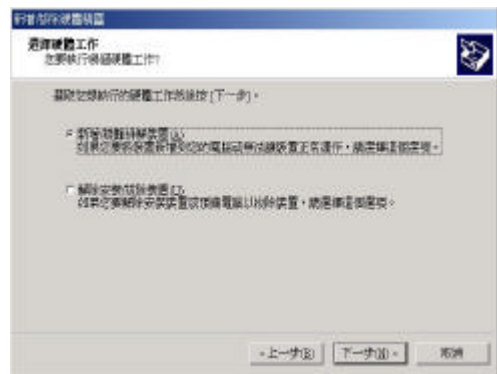
➤ 2 選取



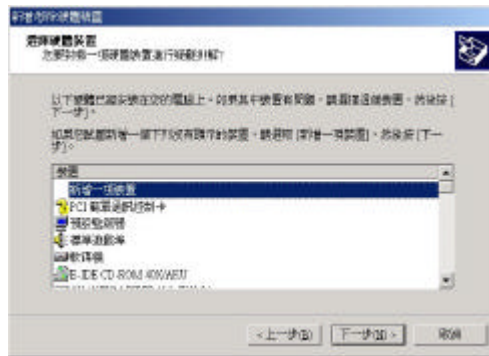
➤ 3-1 選取 下一步



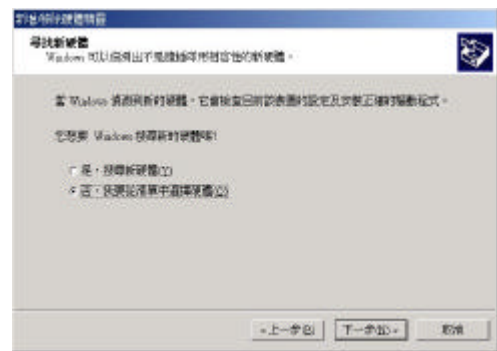
3-2 選取 下一步



3-3 選取 **新增一項裝置**



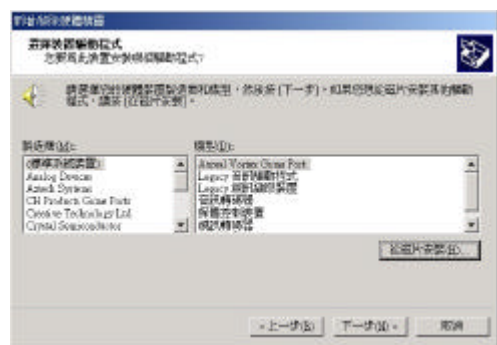
3-4 選取 **否,我要從清單中選取硬體**



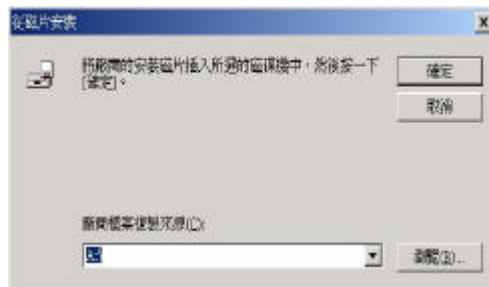
3-5 選取 **音效,視訊及遊戲控制器**



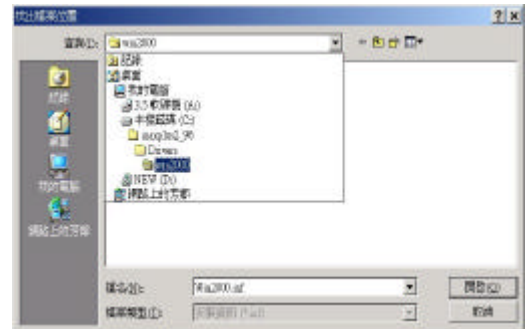
3-6 選取 **從磁片安裝**



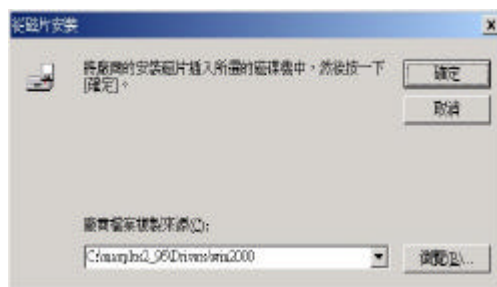
➤ 4-1 選取 **瀏覽**



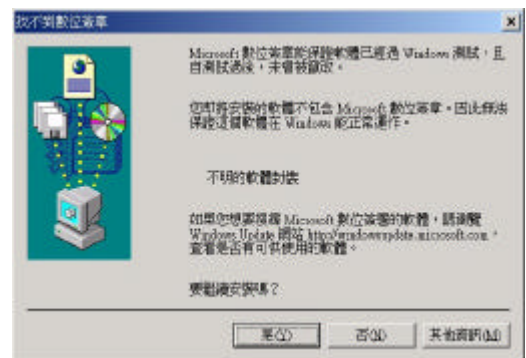
4-2 找出檔案位置後，選取 **開啟**



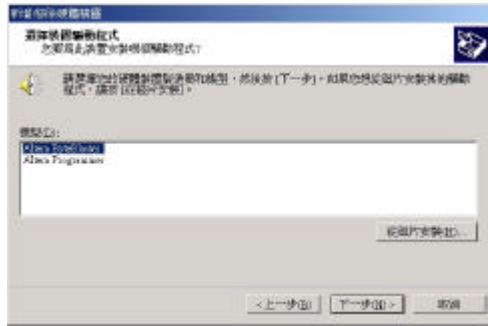
4-3 選取 **確定**



4-4 選取 **是**



➤ 5-1 選取 **Altera Byteblaster**



5-2 選取 **是**



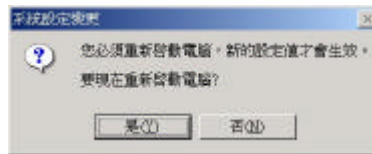
5-3 選取 **下一步**



5-4 選取 **完成**



5-5 **重新啟動電腦**



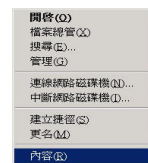
➤ 6 確定是否安裝成功

到桌面上 選取



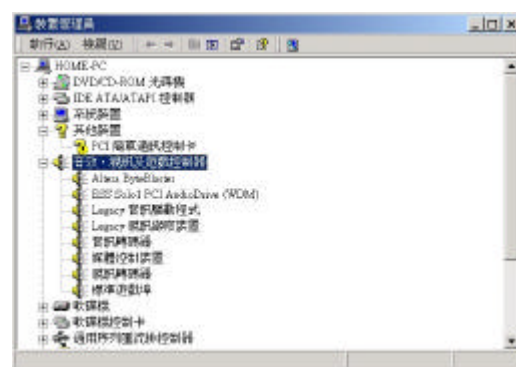
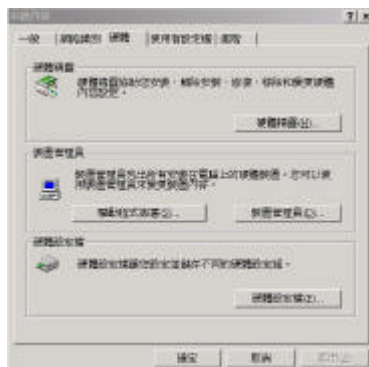
我的電腦

按滑鼠右鍵 選取 **內容**



選取 **硬體下的裝置管理員**

選取 **音效, 視訊及遊戲控制器**



Altera Byteblaster 如有出現在上面, 則表示安裝成功 !!