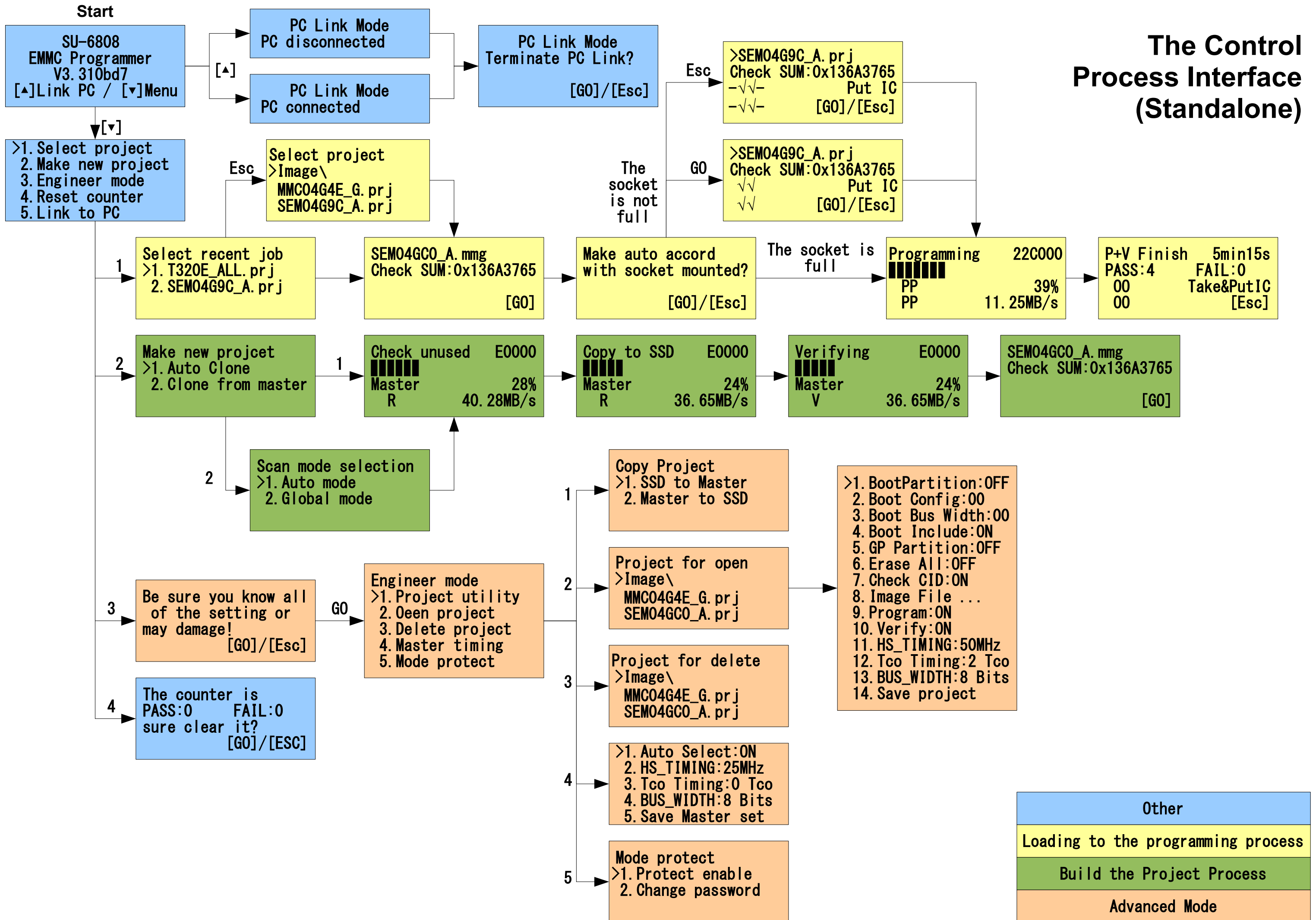
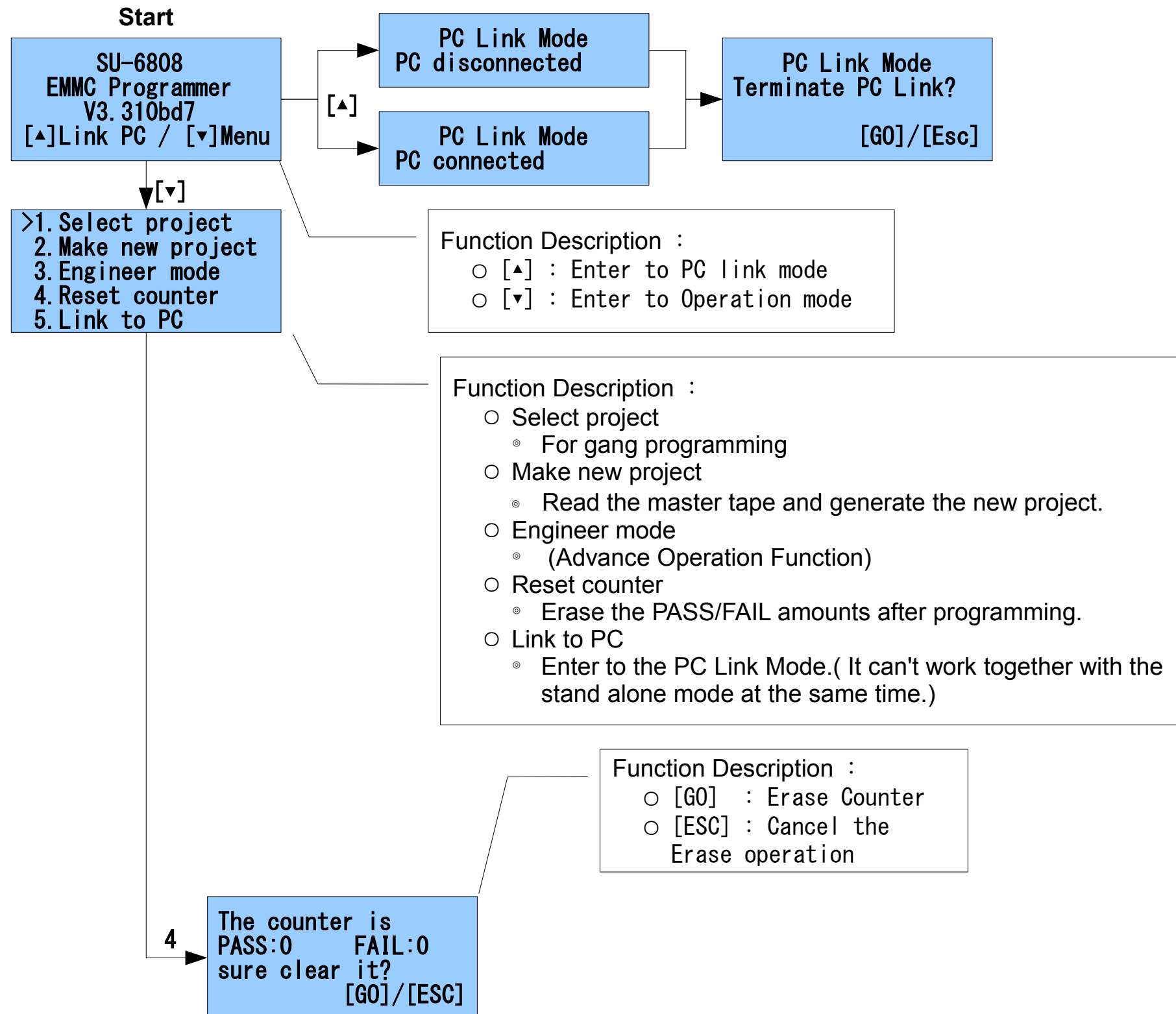


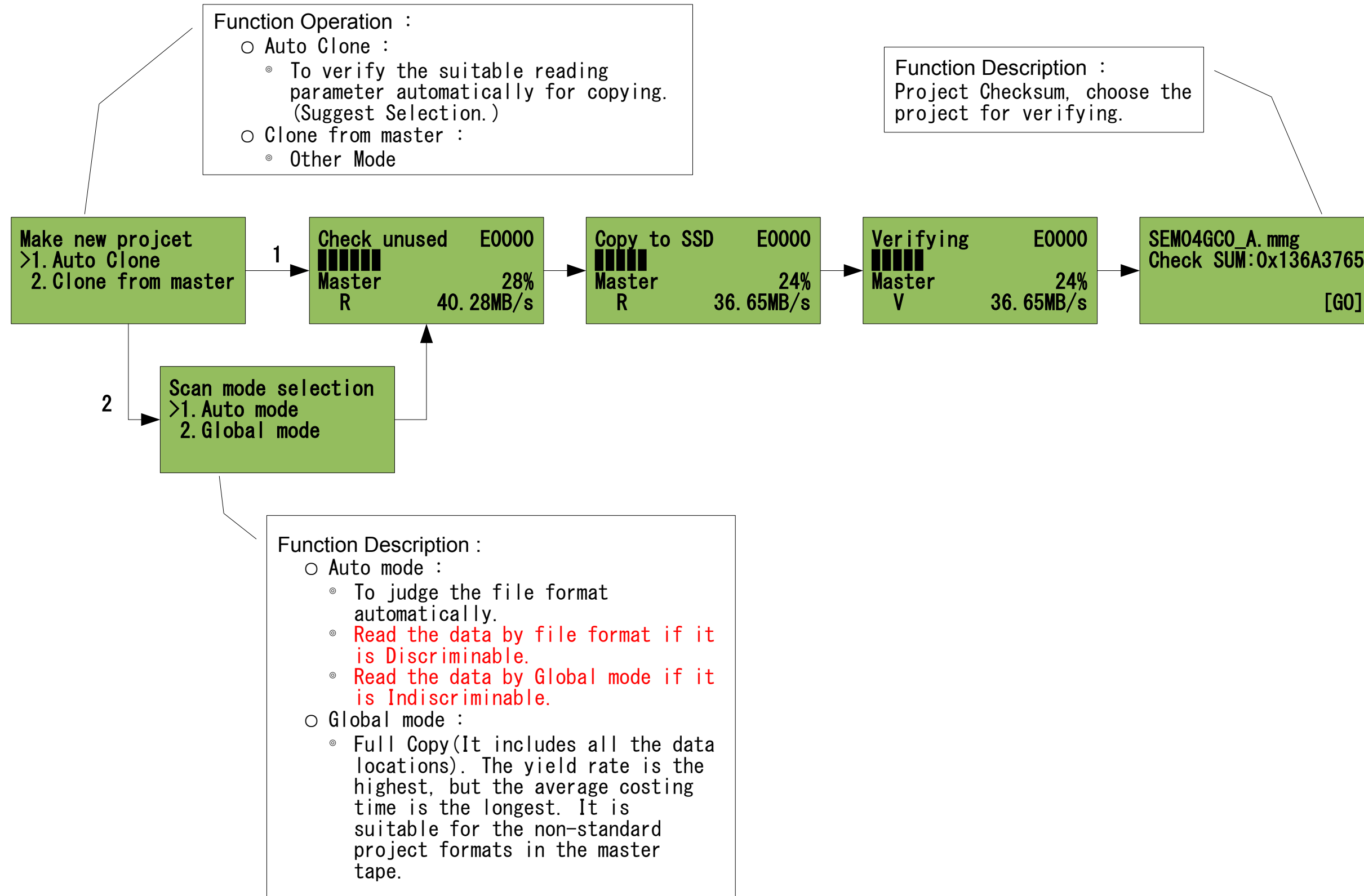
The Control Process Interface (Standalone)



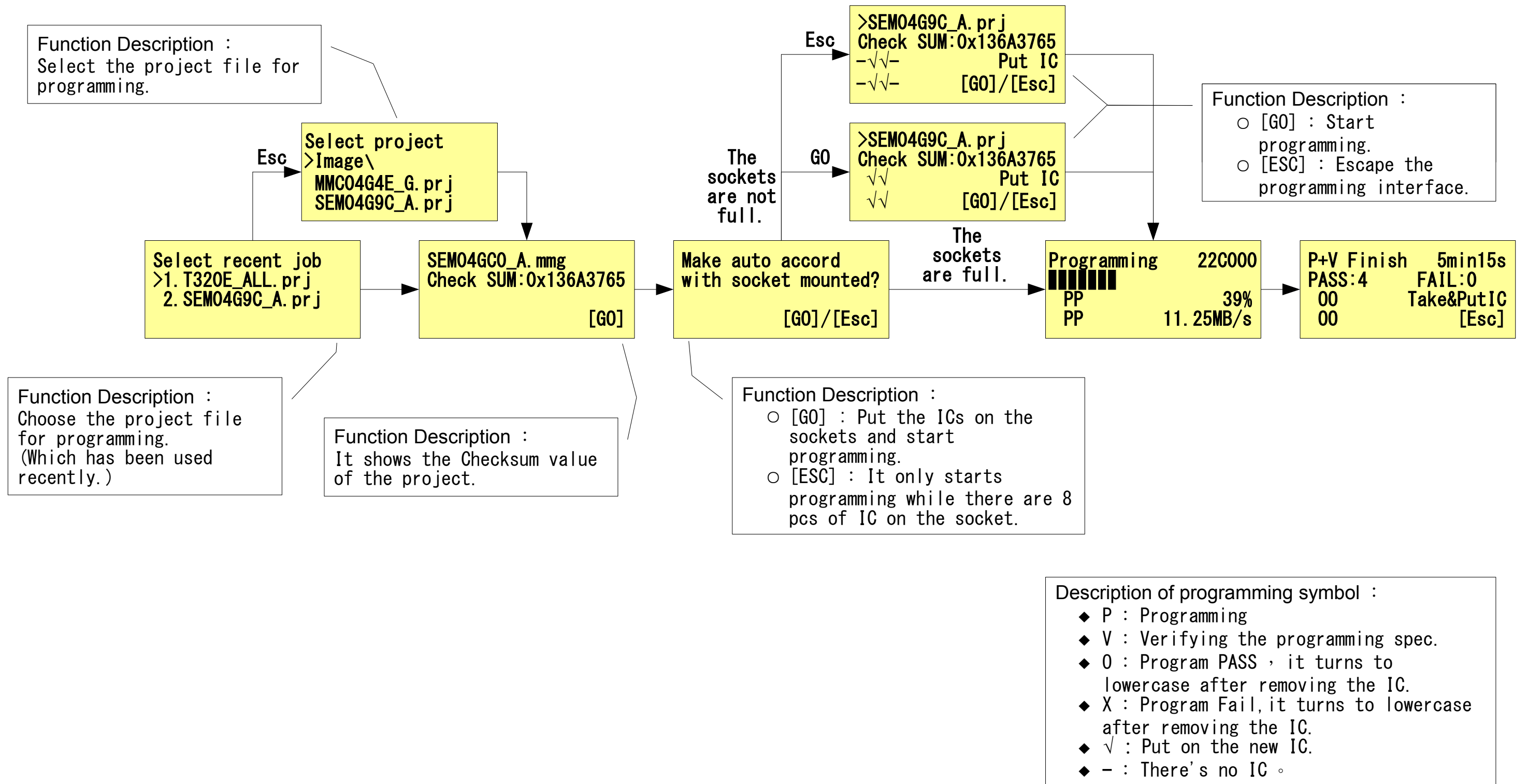
PC Link and other Function



Read the master tape and build the project process



Gang Programming process



Engineer Mode

Function Description :

- SSD to Master :
 - ⊙ Copy the project of SSD to the SD card.
- Master to SSD :
 - ⊙ Copy the project of Master to the SSD card.

Be sure you know all of the setting or may damage!
[GO]/[Esc]

GO
Engineer mode
>1. Project utility
>2. Open project
>3. Delete project
>4. Master timing
>5. Mode protect

1
Copy Project
>1. SSD to Master
>2. Master to SSD

2
Project for open
>Image\
MMC04G4E_G.prj
SEM04GC0_A.prj

3
Project for delete
>Image\
MMC04G4E_G.prj
SEM04GC0_A.prj

4
>1. Auto Select:ON
>2. HS_TIMING:25MHz
>3. Tco Timing:0 Tco
>4. BUS_WIDTH:8 Bits
>5. Save Master set

5
Mode protect
>1. Protect enable
>2. Change password

Function Description :

- Protect enable
 - ⊙ To set the password for starting it.(To avoid operating by other people mistakenly.)
- Change password

>1. BootPartition:OFF
>2. Boot Config:00
>3. Boot Bus Width:00
>4. Boot Include:ON
>5. GP Partition:OFF
>6. Erase All:OFF
>7. Check CID:ON
>8. Image File ...
>9. Program:ON
>10. Verify:ON
>11. HS_TIMING:50MHz
>12. Tco Timing:2 Tco
>13. BUS_WIDTH:8 Bits
>14. Save project

Function Description:
Delete the projects.

Function Description :
(Reading **Master parameter**)

- Auto Select
 - ⊙ ON : To set it automately.
 - ⊙ OFF : To set it by following below steps.
- HS_TIMING
 - ⊙ To set the Clock frecrency of the IC.
 - 25MHz
 - 50MHz
- Tco Timing
 - ⊙ To set the delay data parameters of the IC.
- BUS_WIDTH
 - ⊙ To set the data width for saving the ICs.(2 selections.)
 - 4 bits
 - 8 bits
- **Save Master set**
 - ⊙ **To save the Master set.**

Function Description : **(TX1~TX8 programming parameter setting)**

- Boot Partition
 - ⊙ To set whether program the data of the Boot area.
- Boot Config
 - ⊙ To set the location of starting up the machine. (There are 4 selections as below.)
 - Not boot enable
 - Boot partition 1
 - Boot partition 2
 - User area boot
- Boot Bus Width
 - ⊙ To set the Data bytes when turning on the Machine.(3 selections as below.)
 - x1 or x4(DDR) bus
 - x4(SDR/DDR) bus
 - x8(SDR/DDR) bus
- Boot Include
 - ⊙ To program the Boot data or not.
- GP Partition
 - ⊙ To turn on or off the Group Partition Function.
- Erase All
 - ⊙ To turn on or off the erase function .
- Check CID
 - ⊙ To turn on or off the Check CID function.
- Image File...
- Program
 - ⊙ To turn on or off the program function.
- Verify
 - ⊙ To verify the data or not after programming.
- HS_TIMING
 - ⊙ Set the HS_TIMING(2 selections.)
 - 25MHz
 - 50MHz
- Tco Timing
 - ⊙ To set the delay data parameters of the IC.
- BUS_WIDTH
 - ⊙ To set the data width for saving the ICs.(2 selections.)
 - 4 bits
 - 8 bits
- **Save project**
 - ⊙ **To save the revised setting .**